

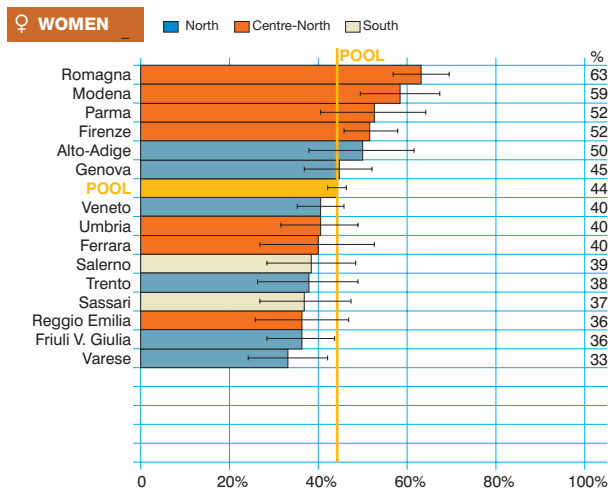
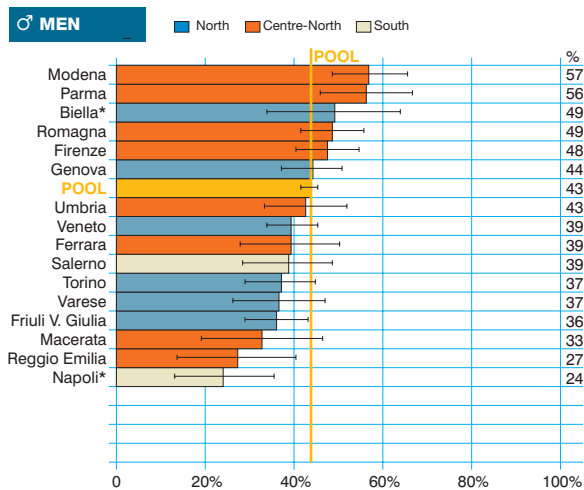
**Myeloma**  
(ICD-10 = C88-90)

Mieloma

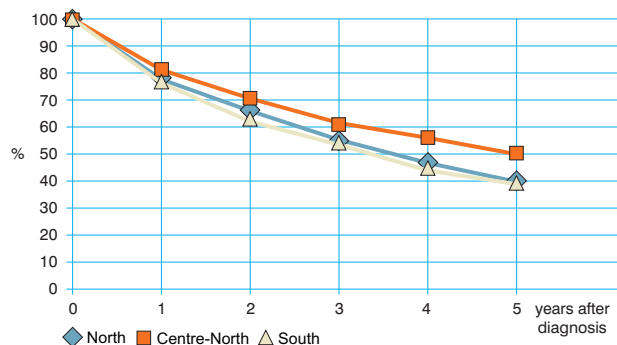
Observed and relative survival (%) by sex and age. Data from the Pool of Italian Cancer Registries follow-up 31.12.2003

	15-44		45-54		55-64		65-74		75+		ALL	
<b>♂ MEN (n)</b>	<b>(95)</b>		<b>(236)</b>		<b>(602)</b>		<b>(1 007)</b>		<b>(962)</b>		<b>(2 902)</b>	
1 year	94	94	89	90	81	82	77	79	60	66	74	77
3 years	77	77	72	73	59	61	50	54	32	43	48	55
<b>5 years</b>	<b>68</b>	<b>69</b>	<b>63</b>	<b>64</b>	<b>45</b>	<b>48</b>	<b>34</b>	<b>40</b>	<b>18</b>	<b>31</b>	<b>34</b>	<b>43</b>
95% CI	(59-77)	(59-78)	(56-69)	(58-70)	(41-49)	(44-53)	(31-37)	(36-43)	(15-20)	(27-35)	(33-36)	(41-46)
<b>♀ WOMEN (n)</b>	<b>(63)</b>		<b>(196)</b>		<b>(447)</b>		<b>(915)</b>		<b>(1 216)</b>		<b>(2 837)</b>	
1 year	92	92	90	90	86	86	81	82	61	66	74	77
3 years	75	75	79	80	65	66	56	59	33	41	50	55
<b>5 years</b>	<b>71</b>	<b>72</b>	<b>66</b>	<b>67</b>	<b>49</b>	<b>50</b>	<b>38</b>	<b>41</b>	<b>18</b>	<b>27</b>	<b>34</b>	<b>41</b>
95% CI	(60-82)	(60-83)	(59-72)	(60-73)	(44-53)	(45-55)	(35-41)	(38-45)	(16-20)	(24-30)	(32-36)	(39-43)
<b>ALL (n)</b>	<b>(158)</b>		<b>(432)</b>		<b>(1 049)</b>		<b>(1 922)</b>		<b>(2 178)</b>		<b>(5 739)</b>	
1 year	93	93	90	90	83	84	79	80	61	66	74	77
3 years	76	76	75	76	61	63	53	57	33	42	49	55
<b>5 years</b>	<b>69</b>	<b>70</b>	<b>64</b>	<b>65</b>	<b>47</b>	<b>49</b>	<b>36</b>	<b>41</b>	<b>18</b>	<b>29</b>	<b>34</b>	<b>42</b>
95% CI	(62-77)	(63-77)	(59-68)	(60-70)	(44-50)	(46-52)	(34-38)	(38-43)	(17-20)	(26-31)	(33-35)	(41-44)

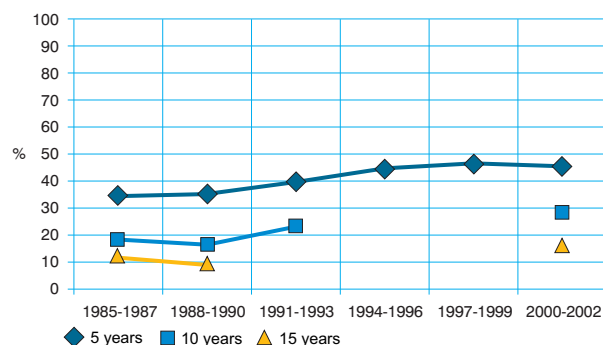
Five-year age-standardised relative survival



Relative survival by Italian Areas



Trend of relative survival Pool of some Italian Registries



➔ Ulteriori dati sono disponibili presso: [www.registri-tumori.it](http://www.registri-tumori.it)